

PORTABLE FORCED AIR HEATER
Illustrated Parts List

PFA-51

Issued: May, 1993

MASTER - B150FT

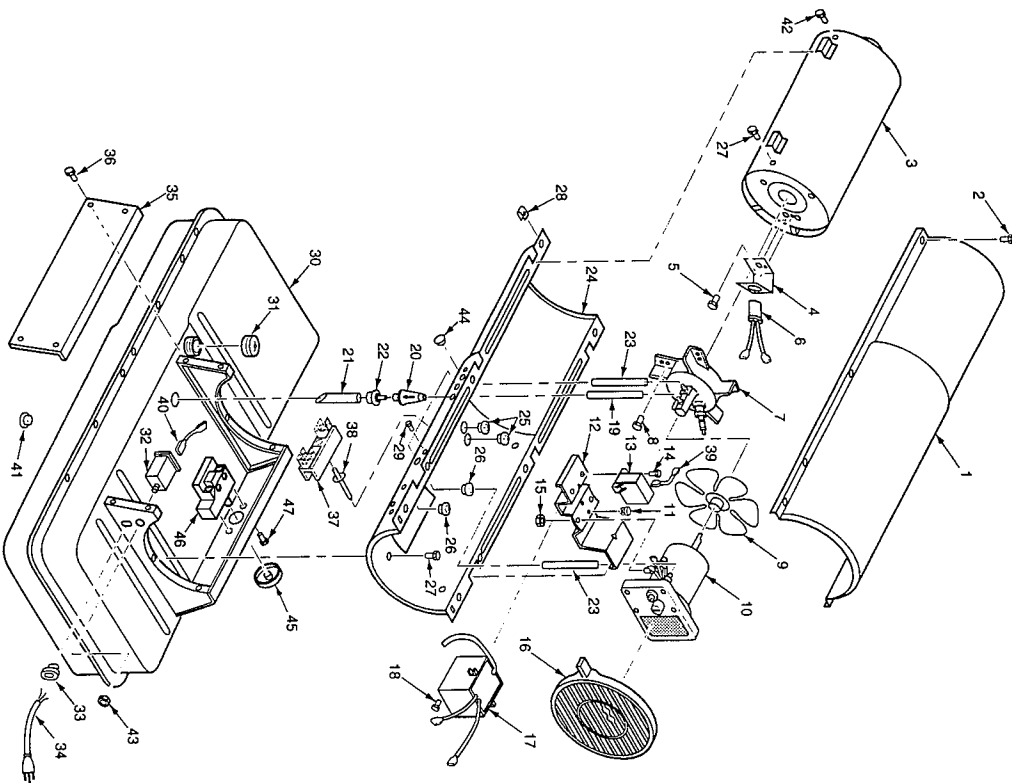
IMPORTANT: Do not use key numbers when ordering service parts. Always order components by part number and description. Include model and serial numbers.

KEY NO.	PART NUMBER	DESCRIPTION	QTY.	KEY NO.	PART NUMBER	DESCRIPTION	QTY.
1	098511-138	Upper Shell	1	24	098511-140	Lower Shell	1
2	M15823-27	Screw, #10-16 x 1/2"	8	25	M50104-03	Bushing	2
3	098512-29	Combustion Chamber	1	26	M50104-01	Bushing	2
4	099229-01	Photocell Bracket	1	27	M11084-27	Screw, #10-16 x 1/2"	6
5	M10908-2	Screw, #6-32 x 3/8"	2	28	M11271-8	Clip Nut	8
6	HA3019	Photocell Assembly	1	29	M15823-37	Screw, #8-18 x 1/4"	1
7	***	Burner Head Assembly	1	30	098513-67	Fuel Tank	1
7-1	HA3010	Nozzle with Sleeve	1	31	097702-01	Fuel Cap (Includes Gasket)	1
7-2	M10659-1	Nozzle Washer	2	32	HA3003	Safety Control	1
7-3	M10809-1	Nozzle Spring	1	33	M11143-1	Strain Relief Bushing	1
7-4	M8882	Nozzle Sleeve	1	34	098219-24	Power Cord	1
7-5	M50924-03	Burner Head Body	1	35	M51077-01AA	Side Cover	1
7-6	M50820-02	Barb Fitting	2	36	M11084-27	Screw, #10-16 x 1/2"	4
7-7	HA3012	Spark Plug	1	37	099125-03	Terminal Board	1
8	M11084-27	Screw, #10-16 x 1/2"	3	38	099157-01	Rivet	1
9	097293-01	Fan	1	39	079010-20	Wire Assembly (Red, 18")	1
10	***	Motor and Pump Assembly	1	40	M16841-57	Wire Assembly (Red, 6")	1
10-1	097300-02	Motor (Split Phase)	1	41	M27417	Drain Plug (Includes "O" Ring)	1
10-2	079975-02	Pump Body	1	42	099230-01	Shoulder Screw	2
10-3	FHPF3-3C	Screw, #10-32 x 3/8"	2	43	099177-01	Hex Nut	1
10-4	M22009**	Rotor Insert	1	44	099213-01	Button Plug	1
10-5	M22456-1**	Pump Rotor	1	45	097658-02	Thermostat Knob	1
10-6	M50545	Pump End Cover	1	46	097657-02	Thermostat	1
10-7	M12179**	Intake Filter	1	47	M10908-1	Screw, 6-32 x 1/4"	2
10-8	M16545	Filter End Cover	1	PARTS AVAILABLE - NOT SHOWN			
10-9	M8940**	Steel Ball, 1/4" diameter	1		097896-04	Wheels	2
10-10	M10993-1**	Relief Spring	1		M16801-2	Axle	1
10-11	M27694**	Adjusting Screw	1		M12831-3	Wheel Support Frame	1
10-12	M22997**	Plug	1		HA2204	Front Handle	1
10-13	M12461-31	Screw, #10-32 x 1"	10		M12345-33	Screw, #10-24 x 1 3/4"	8
10-14	M12244-1**	Output Filter	1		M28526	Nut cap	2
10-15	M11637**	Lint Filter	1		NTC-3C	Hex Lock Nut, #10-24	8
10-16	M50820-02	Barb Fitting	1		097643-01	Tradename Decal	
10-17	M8643**	Blade	4		098224-17	General Information Decal	
11	M50631	Rubber Bumper	2	OPTIONAL ACCESSORIES			
12	098138-02	Motor Mounting Bracket	1		HA1180	Air Gauge Kit	
13	097061-01	Solid State Relay	1		HA2210	Fuel Tank Filter Screen	
14	M15823-39	Screw, #8-18 x 1/2"	2		HA3004	Rotor Kit (M22456-1, M22009, M8643)	
15	NTC-4C	Hex Lock Nut, 1/4-20	2		HA3017	Filter Kit (M11637, M12179, M12244-1, M51150-01)	
16	M51114-01	Fan Guard	1		HA3020	Pump Kit (M27694, M10993-1, M22997, M8940)	
17	098557-06	Ignitor Kit	1				
18	M11084-29	Screw, #10-16 x 3/4"	2				
19	M51345-02	Fuel Line	1				
20	M51150-01**	Fuel Filter	1				
21	M51151-02	Fuel Line Tube	1				
22	M10990-3	Rubber Bushing	1				
23	M50814-03	Airline	1				

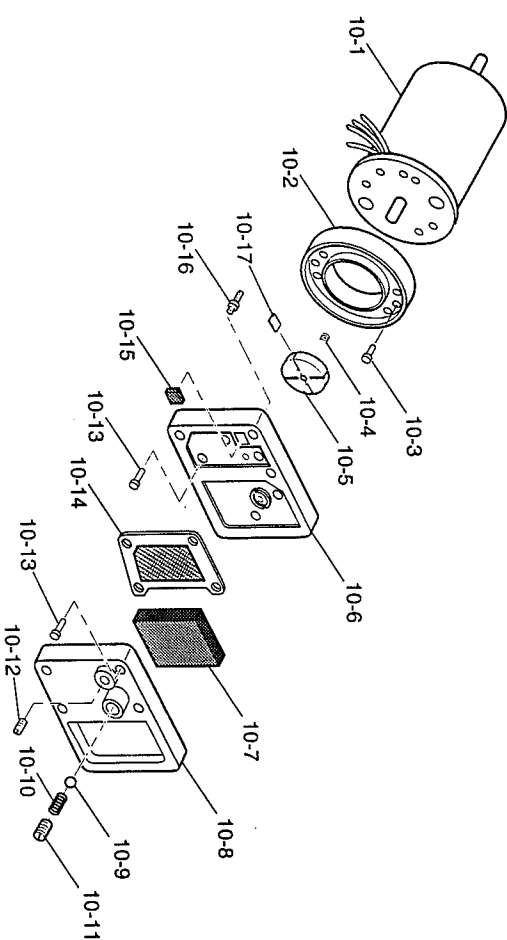
** See OPTIONAL ACCESSORIES

*** Not available as an assembly.

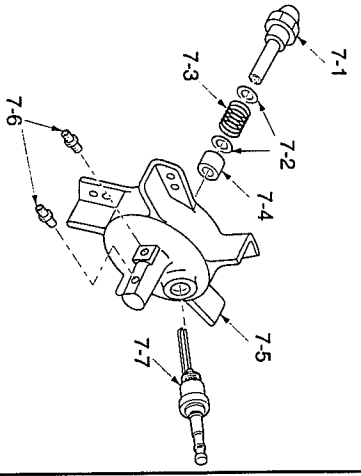
HEATER EXPLODED VIEW



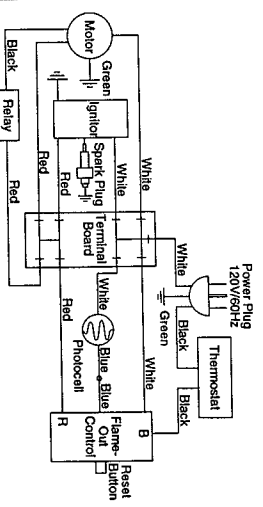
MOTOR PACKAGE ASSEMBLY



BURNER HEAD ASSEMBLY



WIRING DIAGRAM



SPECIFICATIONS

Output Rating (BTU Per Hour)	150,000	Motor RPM	3450
Fuel	Kerosene or #1 fuel oil	Hot Air Output (Approximate CFM)	500
Fuel Tank Capacity (U. S. Gallons)	13.5	Air Pump Pressure (PSI)	5.0
Fuel Consumption (Approximate U.S. Gallons Per Hour)	1.10	Shipping Weight (Approximate Pounds)	65
Electric Requirements	120V/60Hz	Heater Weight Without Fuel (Approximate Pounds)	54
Amperage (During Normal Run)	4.5		No Duct Recommended
Starting Amps	10		