

INSTRUCTION MANUAL WITH PARTS LIST

MODEL B70 HEATER

Capacity (BTU per hour)	70,000
Heated air output (cubic ft. per min.)	340
Ventilating air temperature rise at outlet	190° F.
Net weight (less fuel)	45 lbs
Fuel tank capacity	5 gallons
Type of fuel	Kerosene or No. 1 Fuel Oil
Average fuel consumption per hour	1/2 gallon
Minimum hours of continuous consumption	10
Air outlet diameter	7 inches
Duct	Not recommended
Flue	Not required
Motor	115 volt AC, 60 cycle single phase, 1/10 HP

Distance in Feet	Wire Size (AWG)
100	14
200	12
300	10
400	8
500	6

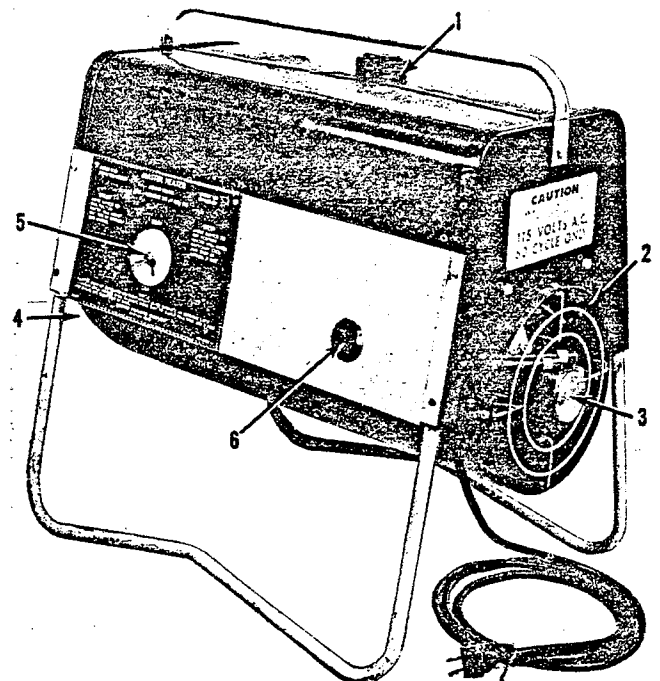
CONNECTING HEATER. (See figure 1.)

Fill the fuel tank (1) with clean fuel. Use kerosene or No. 1 fuel oil only.

CAUTION

Do not use gasoline, heavy fuel oil, or heavy diesel fuels. If any fuel other than kerosene or No. 1 fuel oil is used it may damage combustion chamber assembly requiring service before heater again functions properly. Use of any fuel other than those recommended above will void the warranty. Make sure the fuel is clean and free of water.

Plug the heater cord into the power supply. The pigtail on the heater cord plug must be connected to ground.

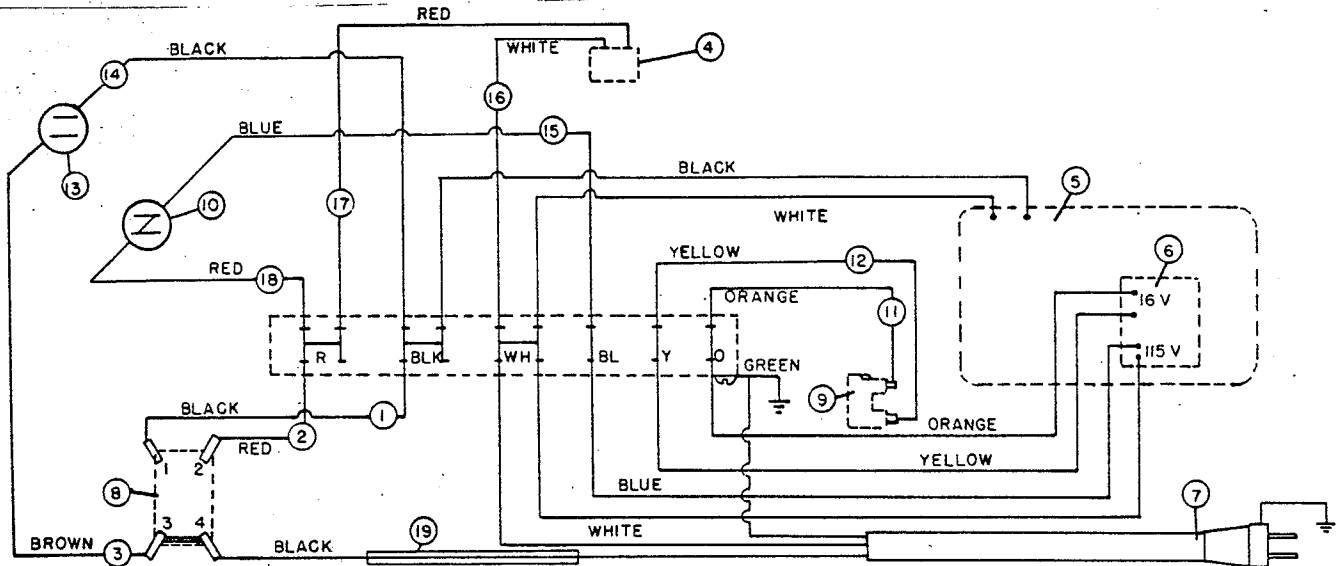


- | | |
|-----------------------------|----------------------|
| 1. Fuel tank | 4. Heated air outlet |
| 2. Air intake | 5. Switch |
| 3. Motor, fan and fuel pump | 6. Fuel Filter |

Figure 1. Portable Heater

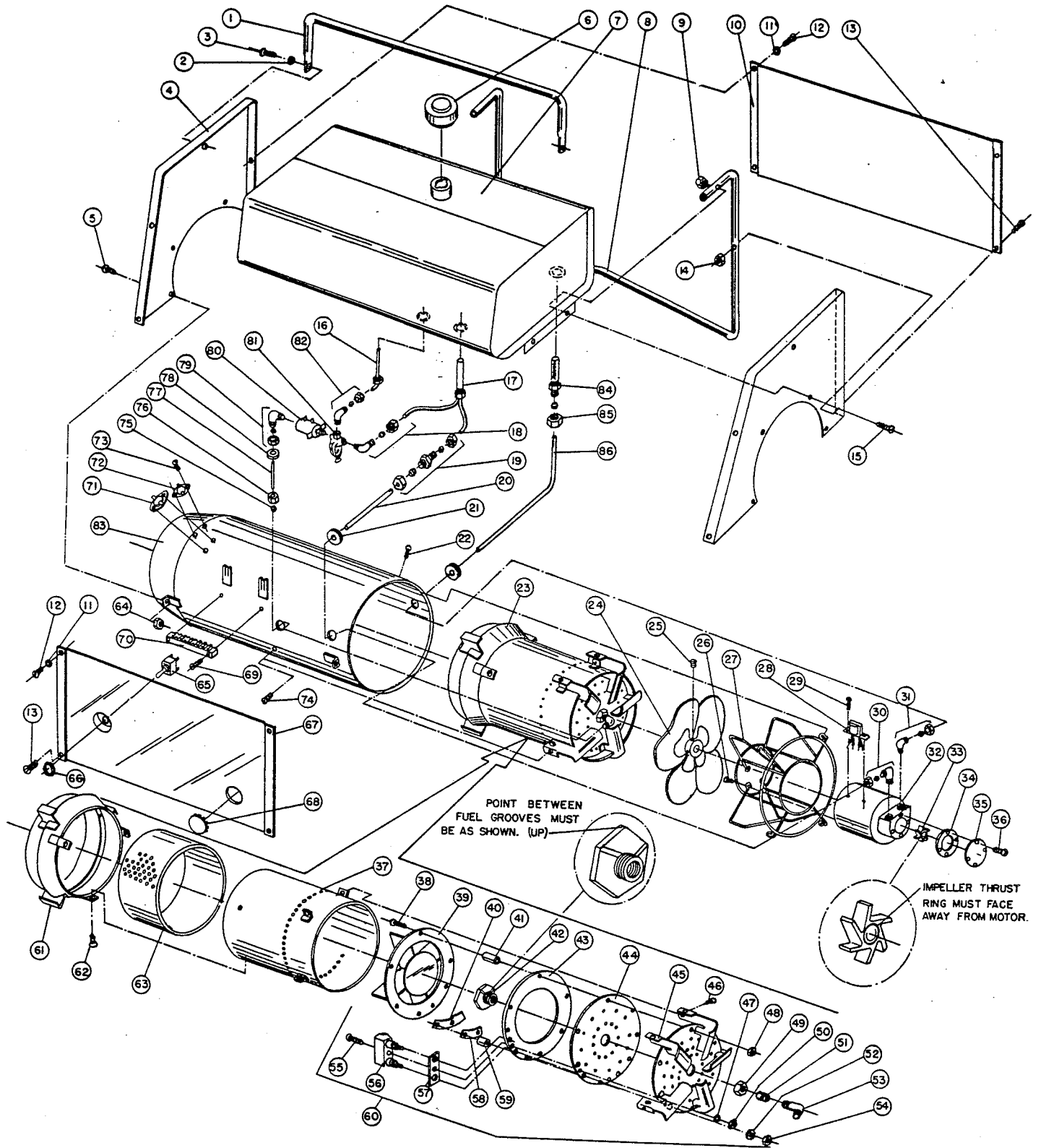
INSTRUCTION MANUAL WITH PARTS LIST

MODEL B70 HEATER



Index No.	Part Number	Part Name	Quantity
1	M5755-3	Wire lead, black	1
2	M5755-1	Wire lead, red	1
3	M5755-2	Wire lead, brown	1
4	M5760	Solenoid valve	1
5	M5721	Motor	1
6	M5301	Transformer	1
7	M5056-1	Cord assembly	1
8	M5727	Switch	1
9	M4752	Glow plug	1
10	M5761	Thermostat, normally closed	1
11	M5696-2	Wire lead, orange	1
12	M5696-1	Wire lead, yellow	1
13	M5762	Thermostat, normally open	1
14	M5754-4	Wire lead, black	1
15	M5754-5	Wire lead, blue	1
16	M5754-2	Wire lead, white	1
17	M5754-1	Wire lead, red	1
18	M5754-3	Wire lead, red	1
19	M5810	Sleeve, insulating	1

Figure 2. Wiring Diagram



MODEL B70 HEATER

Figure & Index No.	Part Number	Part Name	Quantity
4-1	M4396	Handle	1
4-2	WL14C	Lockwasher, int teeth, 1/4	2
4-3	RPC4-4C	Screw, rd hd, 1/4-20 x 1/2	2
4-4	M4843	End cover	2
4-5	RF3-4C	Screw, rh hd, No. 10-32 x 1/2	4
4-6	M3353	Filler cap	1
4-7	M5723	Fuel Tank Assy	1
4-8	M4927	Heater support	2
4-9	NLC-4C	Nut, flex loc, 1/4-20	4
4-10	M4884	Side panel	1
4-11	WL12C	Lockwasher, int teeth, No. 8	4
4-12	STZ-3A	Screw, sh met, No. 8 x 3/8	4
4-13	RF-38C	Screw, rd hd 10-32 x 1	4
4-14	NLF3C	Nut, flex loc, No. 10-32	4
4-15	RC4-8C	Screw, rd hd, 1/4-20 x 1	4
4-16	M6020	Vent fitting assy.	1
4-17	M5718	Standpipe Assy.	1
4-18	M2294	Elbow.	1
4-19	M5777	Union.	1
4-20	M5958	Line, pump outlet.	1
4-21	M3530	Grommet, 7/8 in.	2
4-22	ST-3-4-B	Screw, rd hd, No. 10 x 1/2	4
4-23	M5658	Combustion Chamber and Burner Assy	1
4-24	M4502	Fan	1
4-25	*	Set screw, socket hd, 1/4-28 x 1/4	2
4-26	RC2-3C	Screw, rd hd, No. 8-32 x 3/8	4
4-27	M5232	Grill	1
4-28	M5301-1	Transformer	1
4-29	RCZ-2C	Screw, rh hd, No. 8-32 x 1/4	2
4-30	M2294	Elbow	1
4-31	69248	Elbow	1
4-32	M5721	Motor	1
4-33	M5703	Impeller, pump	1
4-34	M5705	Gasket, pump	1
4-35	M5704	Cap, pump	1
4-36	FHC-Z-3C	Screw, fil hd, No. 8-32 x 3/8	4
4-37	M5667	Combustion chamber	1
4-38	RC-Z-8N	Screw, rd hd, No. 8-32 x 1	8
4-39	M5675	Fin Assy	1
4-40	M5683	Drip pad	1
4-41	M5681	Spacer, burner plate	6
4-42	M4510	Plate, fuel distributing	1
4-43	M5680	Pad support ring	1
4-44	M5679	Pad (Fiberfrax)	1
4-45	M5672	Turning vane assy	1
4-46	ST-2-3	Screw, sh met, No. 8 x 3/8	5
4-47	WL1-00C	Lockwasher, int teeth, No. 4	1
4-48	NPC-2C	Nut, hex No. 8	8
4-49	NJF-8-C	Nut, hex jam, 1/2-20	1
4-50	NPC-00-C	Nut, hex No. 4	1
4-51	M5669	Orifice	1
4-52	WLE-1C	Washer, ext teeth	2
4-53	M5662	Elbow	1
4-54	NPC-1B	Nut, hex, brass, No. 6-32	4
4-55	RC-00-6C	Screw, rd hd, No. 4-40 x 3/4	1
4-56	M4752-2	Igniter Assy	1
4-57	M5684	Igniter insulator	1
4-58	M5686	Segment	1
4-59	M5682	Spacer, burner plate, short	2
4-60	M5671	Burner Plate Assy, Complete	1
4-61	M5659	Cone Assy	1
4-62	ST-2-3	Screw, sh met, No. 8 x 3/8	3
4-63	M5666	Perforated Sleeve	1

MODEL B70 HEATER

Figure & Index No.	Part Number	Part Name	Quantity
4-64	NFL3C	Nut, flex loc, No. 10-32	4
4-65	M5727	Switch	1
4-66	*	Nut, switch	1
4-67	M5701	Control panel	1
4-68	M5776	Button, plug-in	1
4-69	ST-2-8	Screw, sh met, No. 8 x 1	2
4-70	M5749	Terminal Block Assy	1
4-71	M5761	Thermal switch, normally closed	1
4-72	M5762	Thermal switch, normally open	1
4-73	ST-1-2	Screw, sh met, No. 6 x 1/4	4
4-74	ST-2-3	Screw, sh met, No. 8 x 3/8	5
4-75	M5774	Sleeve	1
4-76	M5773	Nut	1
4-77	M5775	Line, burner plate	1
4-78	1000577	Grommet, rubber, 3/4 in.	1
4-79	1000514	Elbow	1
4-80	M5760	Solenoid valve	1
4-81	M5763	Fuel strainer	1
4-82	69258	Elbow	1
4-83	M5782	Outer Shell Assy	1
4-84	M5855	Fuel Filter Assy	1
4-85	M6054	Nut, 1/4 Hex. compression	1
4-86	M5959	Line, pump inlet	1

MODEL B70 HEATER

* No number; furnished as part of complete assembly only.